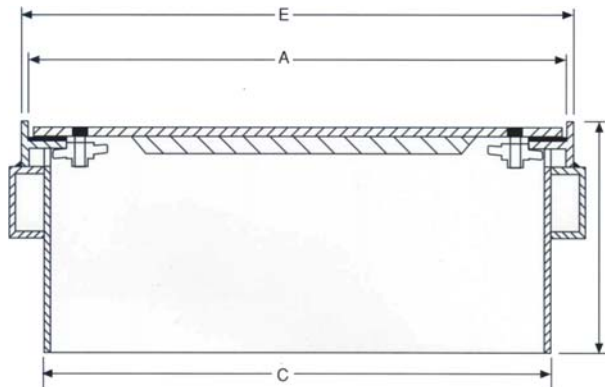
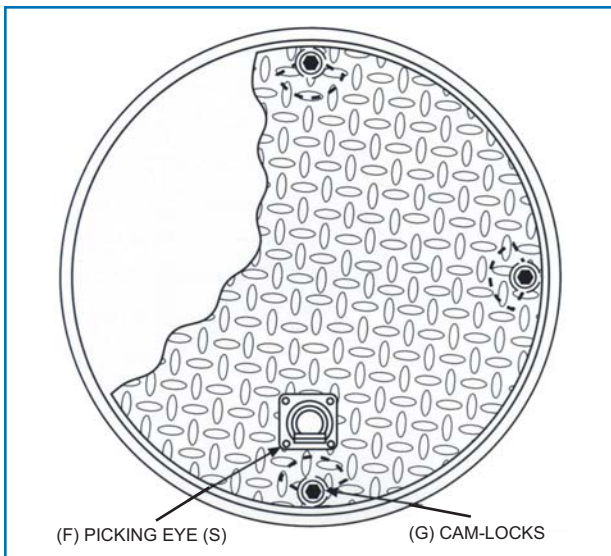


# WTL SERIES

## WATERTIGHT MANHOLES

### CAM-LOCK FEATURES

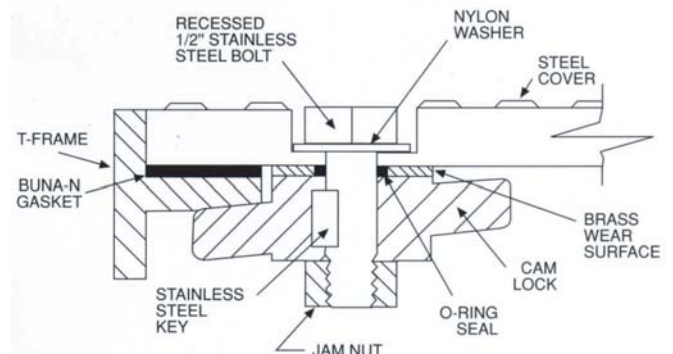
- CAM-LOCK BOLT DOWN DESIGN ALLOWS FOR 1/3rd TURN TO FASTEN COVERS TO FRAMES.
- CAM-LOCKS REMAIN ATTACHED TO MANHOLE COVER, NO MORE LOSING BOLTS.
- CAM-LOCKS ARE O-RING SEALED FOR BETTER WATERPROOFING.
- CAM-LOCKS ARE LOCK INDICATED AND ALLOW COVER REPLACEMENT IN ANY POSITION. NO MORE LOCATING BOLT LOCATIONS.
- CAM-LOCKS ARE OPTIONAL AND CAN BE ADDED TO ANY MANHOLE FOR WATERTIGHT OR RESTRICTED ACCESS. ADD SUFFIX "L" TO MODEL NUMBER.
- LOCK MECHANISMS ARE CONSTRUCTED OF STAINLESS STEEL, CAST IRON AND BRASS WEAR SURFACED TO INSURE LONG TERM RELIABILITY.



### STANDARD FEATURES

- REINFORCED DIAMOND PLATE STEEL COVERS WITH H-20 TRUCKLOAD RATING.
- 1/8" BUNA-N GASKET.
- 14 GAUGE SKIRTS.
- RECESSED WATERTIGHT PICKED EYE(S) FOR EASY COVER REMOVAL.
- CONCRETE CHANNEL ANCHORS.
- ALL STEEL COATED WITH RUST PREVENTIVE PAINT.
- OPTIONAL INTERNAL ACCESS PORTS AVAILABLE. SEE OUR DUAL AND TRIPLE ACCESS SERIES MANHOLES.

### SECTION AA



#### SOLID COVER CAM-LOCKED WATERTIGHT MANHOLES

MODEL	A	B	C	D	E	F	G
<b>240 WTL</b>	24"	13"	22 1/4"	3/8"	24 3/4"	1	2
<b>300 WTL</b>	29 3/4"	13"	28 3/4"	3/8"	30 3/4"	1	4
<b>360 WTL</b>	35 3/4"	13"	35"	3/8"	36 1/2"	2	4
<b>380 WTL</b>	38"	13"	37 1/2"	3/8"	38 1/2"	2	4
<b>420 WTL</b>	42"	13"	41 1/2"	1/2"	43"	2	4
<b>480 WTL</b>	48"	13"	46 1/2"	1/2"	49"	2	6

**MODEL NO: WTL**

**DWG NO: WTL**

WTL  
WATERTIGHT  
SOLID COVER  
MANHOLES

**FAIRFIELD INDUSTRIES, INC.**

827 NORTH 6TH STREET NEWARK, NJ 07107

PHONE: 973-483-0100 FAX: 973-483-5333

www.fairfield-industries.com

Copyright © 2008 Fairfield Industries, Inc. All rights reserved